



MCMAHON HALL WIRELESS CELLULAR ANTENNAS

UW Environmental Health & Safety (EH&S) provides the following safety information for University personnel who work in or near University locations where wireless cellular antennas are installed.

SITE INFORMATION

- Address:** 1410 NE Campus Parkway, Seattle
- Carrier (s):** Verizon, AT&T, & T-Mobile
- Antenna type:** Sector/Directional antennas
- Co-locators:** YES
- Location(s):** Rooftop parapets
- Site access:** Locked doors (2)
- Last survey date:** Verizon, September 20th, 2022

- This building consists of 54 antennas in 9 sectors on the main roof.

Location	RF Exposure Measurements	Hazard category
Ground level	Less than 0.15% of FCC general public exposure limit.	1
Roof level, penthouse	Less than <150 % of FCC general public exposure limit.	2

AERIAL VIEW OF THE ANTENNAS

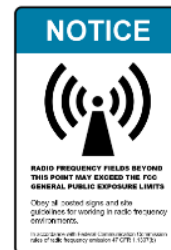
Figure 1 shows an aerial view of the rooftop and platform where the antennas are located.



Figure 1: View from the roof.

SIGNS AND BARRIERS

- Blue NOTICE signs are mounted on the rooftop access doors and next to the antennas. The signs indicate the radiofrequency field beyond this point may exceed the general public exposure limits.
- Orange barriers are also located on the rooftop approximately 6 feet in front of the antennas (refer to diagram below).
- **Do not loiter or stand directly in front of these screen enclosures.**



WIRELESS CELLULAR ANTENNA LOCATIONS

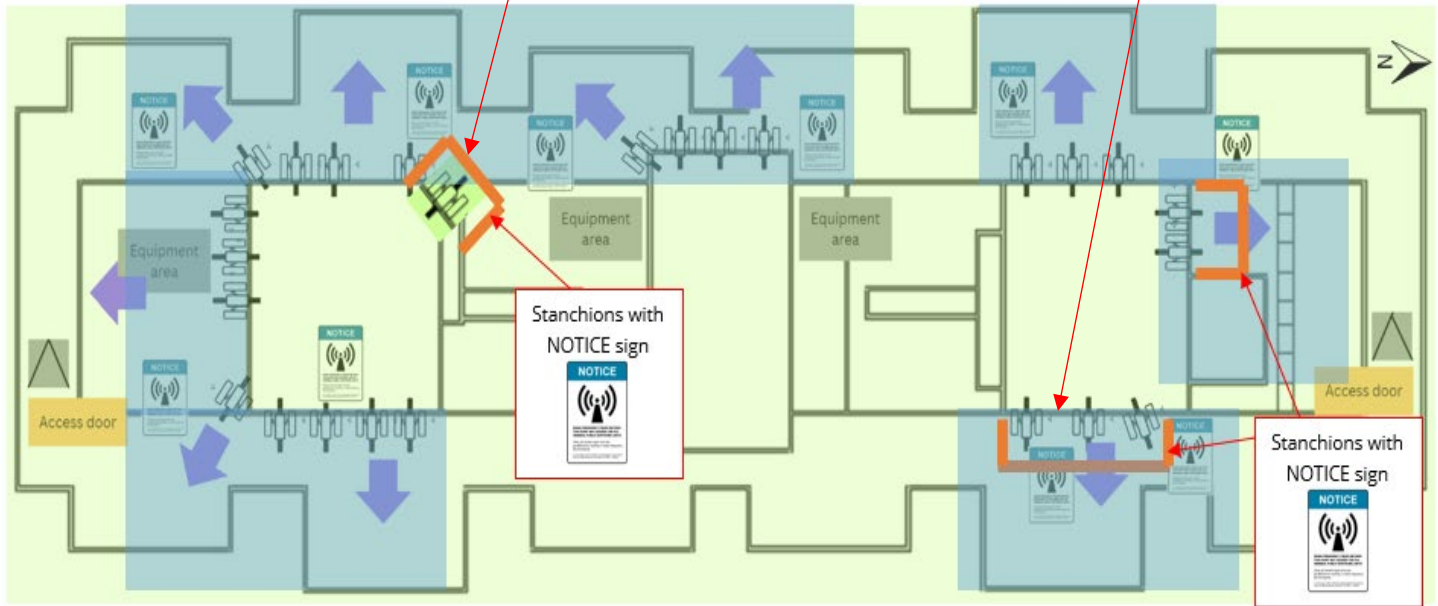


Figure 2: View looking down at the roof of McMahon Hall

Symbols/ Color	Definitions	Signage
	Direction of mounted antenna or directional RF energy	NA
	Mounted antenna/panel	NA
	Stanchion/barriers	NA
Category 1	Area where RF fields are too weak to cause exposures greater than general public limit SAFE FOR GENERAL PUBLIC	No signage
Category 2	Area where RF fields could potentially be greater than general public limit but less than occupational limit NOT SAFE FOR GENERAL PUBLIC BUT SAFE FOR WORKERS.	

Table 1: Symbols and color legends, definitions and required posting.

Visit the [Radiofrequency: Wireless Cellular Antennas page](#) on the EH&S website for more information.

Contact EH&S at 206.543.0463 or radsaf@uw.edu with questions.